

ROCK Updates

Welcoming New ROCK Members



ROCK is incredibly fortunate to officially welcome **Dr. Aaron Krych** from Mayo Clinic and **Dr. Kathryn Bauer** from Andrews Institute into the group.

Upcoming Research Coordinator Conference Call

- The ROCK research coordinators will have a second conference call to discuss enrollment for the prospective cohort and RCT at each site and to ensure that all sites are keeping up with data collection at follow-up time points.

Industry/Financial Update

- Allosource** – Commitment for 50K per year (in 25K installments every 6 months) for 3 years.
- Vericel** – Agreed to provide corporate sponsorship – 25K in 2016.

Future Directions

- Form changes** – The prospective cohort forms are undergoing changes to incorporate features requested by industry support, genetic samples, and all focal cartilage defects. Please email Evan (Evan.Bannister@uphs.upenn.edu) with any other suggestions for form changes.
- If you have any announcements or updates that you would like highlighted in the quarterly newsletter, contact Eileen (storeye@email.chop.edu).

Upcoming Events

<http://kneeocd.org/rock-members/calendar/>
ROCK Annual Meeting at PRISM



PRISM
 Pediatric Research in
 Sports Medicine Society

Texas Scottish Rite Hospital
 Dallas, TX

Wednesday January 25, 2017
 6-9 PM

Thursday January 26, 2017
 9-5 PM

At the annual meeting, the group will review:

- Previous treatment standardization project** (led by Ben Heyworth): We will review the diagnostic OCD categories and ensure that we are still in agreement about appropriate treatment options for patients with OCD based upon their age, skeletal maturity, and arthroscopic/MRI stage of the condition.
- Foundation research document:** We will review our outcome questions and variables that were developed before the prospective outcomes registry.

Prospective Cohort/RCT Update

PC Enrollment

Site	# Enrolled
Connecticut Children's Med Ctr	64
Children's Hospital of Philadelphia	64
Texas Scottish Rite Hospital	56
St. Luke's Intermountain	47
Cincinnati Children's Hospital	31
Medical College of Wisconsin	25
Rady Children's Hospital	22
Tennessee Orthopaedic Alliance	20
Washington Univ St. Louis	13
Hospital for Special Surgery	12
Penn	10
Children's Mercy Kansas City	7
Children's Ortho of Atlanta	7
University of MN/TRIA	4
Boston Children's Hospital	0
Kaiser Permanente	0
Cleveland Clinic	0
Colorado Children's Hospital	0
Andrews Institute Children's Health	0
Hospital for Sick Children	0
University of Gothenburg	0
Asklepios Clinic St. Georg Hamburg	0
National University Health System	0

If you have any questions, please contact ROCK@uphs.upenn.edu If you are IRB approved and a Data Sharing Agreement has been fully executed, please begin enrolling and sending data to Penn. If you are IRB approved but pending Data Sharing Agreement finalization, please begin enrolling, but hold off on sending forms.

382

RCT Enrollment

If you have questions, contact Ryan Fallon at BCH: Ryan.Fallon@childrens.harvard.edu || 857-218-3272

Site	Surgeon	# in RCT	# in past month
Boston Children's Hospital	Heyworth	20	0
Children's Hospital of Philadelphia	Ganley	17	4
Rady Children's Hospital	Edmonds	9	0
Connecticut Children's Medical Ctr	Nissen	6	0
Medical College of Wisconsin	Lyon	6	0
Cincinnati Children's Hospital	Wall	6	0
St. Luke's Intermountain	Shea	5	0
Rady Children's Hospital	Chambers	3	0
Hospital for Sick Children	Murnaghan	2	0
Connecticut Children's Medical Ctr	Milewski	1	0
Hospital for Special Surgery	Green	1	0
Kaiser Permanente	Weiss	1	0
Boston Children's Hospital	Kocher	1	0
Tennessee Orthopaedic Alliance	Anderson	1	0
Rocky Mountain	Polousky	1	0
Washington University of St. Louis	Wright	1	0
Washington University of St. Louis	Nepple	1	0
Penn	Carey	0	0
		82	4

Randomization

1. Call Ryan Fallon (office number 857-218-3272 or cell number 207-475-8036) or Greg Myer (cell number 513-404-4382). Details are also available on the ROCK Website.

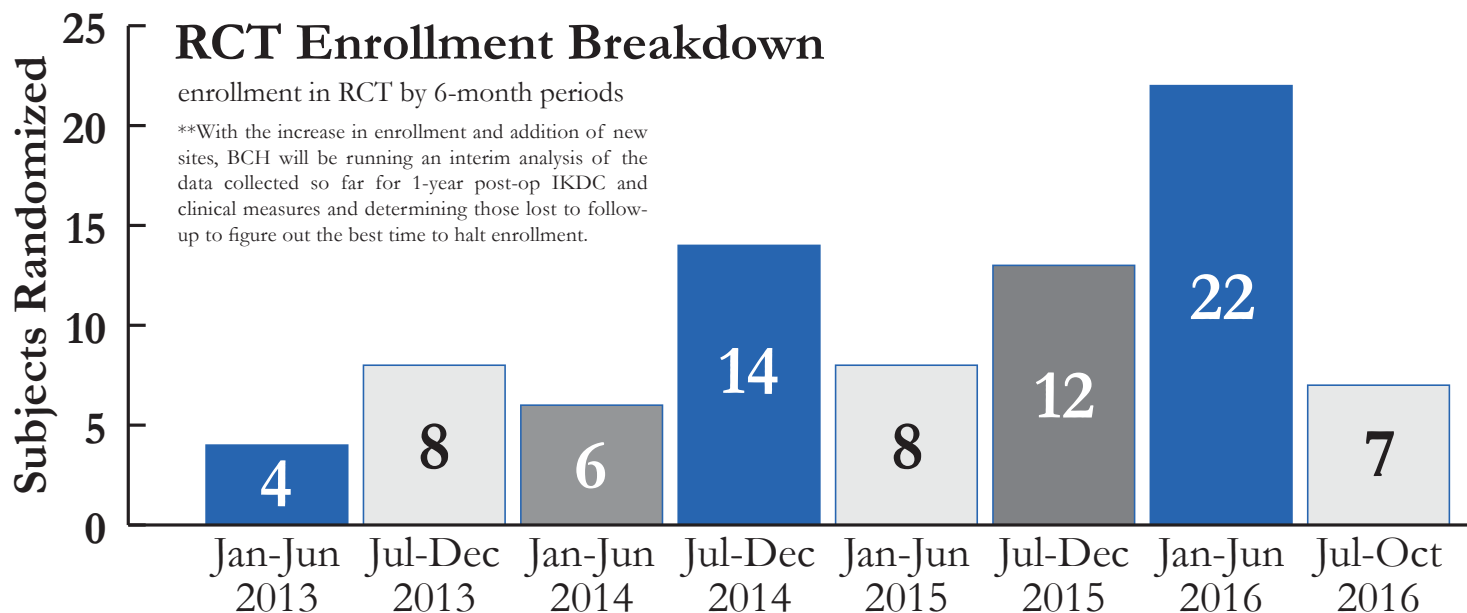
2. Enroll and randomize yourself (option #1 may not be available without planning ahead)

1. Enroll patient

- <https://rockstudygroup.research.cchmc.org/auth/login>
- Select 'Enroll patient' from the tab on top of the page
- Enter site, Patient ID (only include last 3 digits and laterality)
- Select 'Consented'
- Prompted to enter eligibility criteria, including activity restriction and NWB

2. Randomize Patient

- <https://rockstudygroup.research.cchmc.org/auth/login>
- Must use **SURGEON ACCOUNT** to randomize.
- From login, select 'Patients' from tab on top of the page
- Find the patient ID
- Select corresponding blue 'Randomize Patient' button on the right side of the page



Case of the Month

- Powerpoint of past cases available at <http://kneeocd.org/category/case-discussion/>

- Upcoming cases:

November: University of Minnesota
December: Children's Mercy Kansas City

2017

January: Hospital for Sick Children
February: Cincinnati Children's
March: St. Luke's

April: CHOP
May: Boston Children's
June: Tennessee Orthopaedic Alliance
July: National University of Singapore
August: Children's Hospital of Wisconsin
September: Penn
October: Connecticut Children's

November: Andrew's Institute
December: Kaiser Permanente

2018

January: Children's Hosp. of Colorado
February: Wash Univ. of St. Louis
March: Hospital for Special Surgery

Website Activity

Traffic Updates

- **2,277 sessions** (July=2,054; May=2,336; Mar=2,206; Jan=2,100; Nov 2015=2,180; Oct 2015=2,269)
- **1.77 pages/session** (July=1.73; May=1.53; Mar=1.75; Jan=1.7; Nov 2015=1.7; Oct 2015=1.57)
- **73% new sessions** (July=70%; May=70%; Mar=66%; Jan=72%; Nov 2015=70%; Oct 2015=76%)

Sites before kneeocd.org on google search

- **'knee ocd' = 20** (July=13; May=15; Mar=19; Jan=21; Nov 2015=20; Oct 2015=20)
- **'Osteochondritis dissecans' = 17** (July=23; May=28; Mar=45; Jan=45; Nov 2015=60; Oct 2015=50)
- **'knee osteochondritis dissecans' = 32** (July=25; May=26; Mar=21; Jan=26; Nov 2015=23; Oct 2015=25)
- **'osteochondritis dissecans of the knee' = 32** (July=26; May=28; Mar=20; Jan=28; Nov 2015=27; Oct=29)

Recent ROCK Publications

<http://kneeocd.org/rock-members/literature-review/>

Long-Term Outcomes after Autologous Chondrocyte Implantation: A Systematic Review at Mean Follow-Up of 11.4 Years.

Pareek A, Carey JL, Reardon PJ, Peterson L, Stuart MJ, Krych AJ.
Cartilage. 2016 Oct;7(4):298-308.

Research in Osteochondritis Dissecans of the Knee: 2016 Update.

Nepple JJ, Milewski MD, Shea KG.
J Knee Surg. 2016 Oct;29(7):533-538.

Osteochondritis Dissecans Lesions in Family Members: Does a Positive Family History Impact Phenotypic Potency?

Gornitzky AL, Mistovich RJ, Atuahene B, Storey EP, Ganley TJ.
Clin Orthop Relat Res. 2016 Oct 18.

Insights into the Epiphyseal Cartilage Origin and Subsequent Osseous Manifestation of Juvenile Osteochondritis Dissecans with a Modified Clinical MR Imaging Protocol: A Pilot Study.

Ellermann J, Johnson CP, Wang L, Macalena JA, Nelson BJ, LaPrade RF.
Radiology. 2016 Sep 15.

Pediatric Knee Osteochondritis Dissecans Lesions.

Cruz AI Jr, Shea KG, Ganley TJ.
Orthop Clin North Am. 2016 Oct;47(4):763-75.

ROCK Around the World

International Cartilage Symposium 13th World Congress



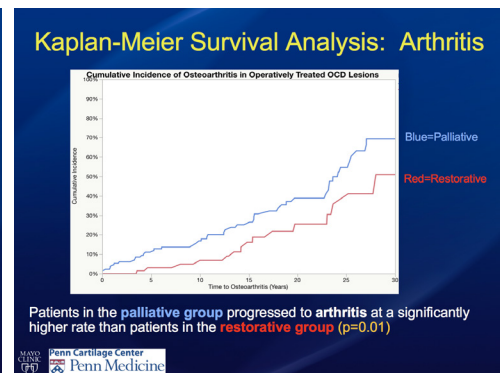
Dr. Carey and Dr. Krych presented at the ICRS 13th World Congress in Italy last month.

MAYO CLINIC

High Rates of Osteoarthritis Following OCD Fragment Excision: A 40-Year Population-Based Study

James L. Carey, MD, MPH
Thomas L. Sanders, MD
Ayoosh Pareek, BS
Nick R. Johnson, BS
Michael J. Stuart, MD
Aaron J. Krych, MD

Penn Cartilage Center
Penn Medicine



2016 Penn Cartilage Symposium

The Penn Department of Orthopaedic Surgery
PRESENTS

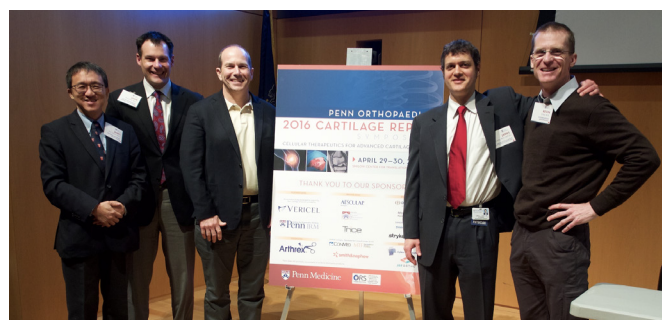
2016 CARTILAGE REPAIR SYMPOSIUM

CELL THERAPIES FOR
ADVANCED CARTILAGE REPAIR

Made possible by generous support from
Penn IRM

COURSE DIRECTORS: James L. Carey, MD, MPH & Robert L. Mauck, PhD

► APRIL 29 – 30, 2016



International Faculty

James Hui, MBBS, FRCS
Head & Senior Consultant Division of Paediatric Orthopaedics
Director Cartilage Repair Programme
Department of Orthopaedic Surgery
National University Health System
Singapore

Lars Peterson, MD, PhD
Professor of Orthopaedics
University of Gothenburg
Gothenburg, Sweden

Henning Madry, MD, PhD
Chair, Experimental Orthopaedics and Osteoarthritis Research
Professor
Saarland University Medical Center
Homburg, Germany

